



JAPAN TOUR PACKAGE STANDARD

Dear Sir/Mam

Greetings from Tripoholidays

Welcome to the world of extraordinary travel with Tripoholidays! Your adventure awaits, filled with discovery and relaxation. We're thrilled to craft unforgettable moments for you. Let the journey begin, and may each destination bring joy and enriching experiences. Thank you for choosing us as your travel partner.

Day Wise Itinerary

Day 1

TOKYO ARRIVAL

Arrival in Tokyo then proceed to hotel & check in (International check in time 14:00) explore at your leisure. No planned activities are scheduled, giving you the flexibility to immerse yourself in the local culture, indulge in culinary delights, or simply relax and unwind. Overnight stay at hotel.

Meals :

Day 2

MOUNT FUJI TOUR

Experience the beauty around Mount Fuji with a day trip from Tokyo. Start at Kawaguchiko Oishi Park for stunning photos of Lake Kawaguchi and Mount Fuji. Next, visit Arakura Sengen Park for panoramic views and cherry blossoms in spring. Then, head to Oshino Hakkai to explore its eight lakes and taste fresh mountain water. Finally, reach the 5th Station of Mount Fuji, where you can enjoy local snacks and shop for souvenirs. In winter, visit the 4th Station or Yamanakako Hananomiyako Park for breathtaking views of the diamond Fuji sunset.

Meals : [breakfast](#)

Day 3

HOP ON HOP OFF BUS TOUR

See the highlights of the city, such as Tokyo Sky Tree, Asakusa, Tokyo Tower, Tsukiji, and Ginza. You can hop off and back on the bus at your convenience and explore the sights you're interested in at your own pace. From the open-top bus, you'll enjoy panoramic views of Tokyo as you listen to the commentary on your audio guide.

Meals : [breakfast](#)

Day
4

OSAKA ARRIVAL

After having breakfast, you will proceed to check out from hotel to train station and you can catch your train for Osaka, after arrive in Osaka, then proceed to hotel and check in.

Meals : [breakfast](#)

Day
5

HIMEJI CASTLE ,ARIMA ONSEN & MT. ROKKO TOUR

Discover the highlights of Japan in a day! Start with Himeji Castle, famous for its stunning white exterior and exquisite architecture. Explore Koko-en, a beautiful garden featuring nine distinct styles that showcase Japan's seasons. Visit Kouroen Former Residence Park to feel the charm of traditional residences. Relax at Arima Onsen, one of Japan's oldest hot springs, before heading to Mount Rokko for breathtaking views of Kobe and the Seto Inland Sea from its 931-meter peak. We'll conclude the day with a return to Osaka Namba, wrapping up an unforgettable journey through Japan!

Meals : [breakfast](#)

Day
6

NARA & UJI DAY TOUR

Discover the best of Nara and Uji on a day trip from Osaka. Start by feeding friendly deer in the maple-filled Nara Park, then visit the iconic Todai-ji Temple and the lantern-lined Kasuga Taisha Shrine. In Uji, stroll charming streets filled with matcha treats, explore the stunning Byodo-in Temple or the Tale of Genji Museum, and unwind at Genji no Yu, a natural hot spring offering a peaceful, traditional Japanese bathing experience.

Meals : [breakfast](#)

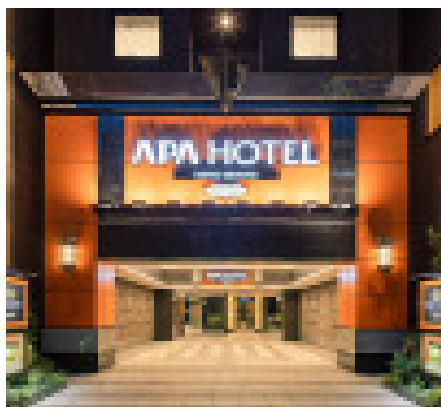
Day
7

OSAKA DEPARTURE

Depending on the time of your flight, breakfast at the hotel. Leave the hotel by 12:00 p.m. (international check-out time). One day prior to the transfer, we will notify you of the precise collection time (usually three hours before your flight time) meet your driver for a private ride to the Osaka Airport.

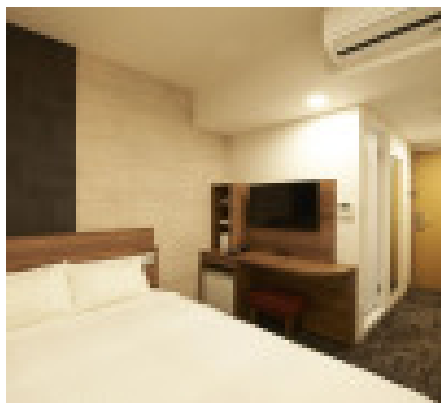
Meals : [breakfast](#)

Hotel Details



APA Hotel Ueno Ekimae

3 star



Sotetsu Fresa Inn Kitahama

3 star

Costing Details

Offered Price

INR 139,999

Published Price

INR 149,999

Inclusions

- 6 Night of Accommodation

- 6 Breakfast

- 2 Airport Transfers

Transfers - hotel to train station or vice-versa on SIC

- Transfers – from hotel to pick-up point for SIC tours

- Transfers – from drop-off point (train station) to hotel

- Mount Fuji Full Day Tour (Entry Ticket – Included)

- Tokyo – Hop on Hop of Bus Tour (Ticket – Included)

- Himeji Castle, Arima Onsen & Mt. Rokko Tour (Bus fare , Guided fee & Entry Ticket to Himeji castle)

Exclusions

- International & Domestic Flights & Visa Issuance Charges.

- Visa

- Entrance fee to Todaji temple

€ € € Expenses of personal nature Example - Tipping, laundry & Telephone calls, Beverages etc

- Tipping to Guides and Drivers

- Porter Service at the airport and hotel

- Anything not mentioned in above in Inclusions & itinerary

Our Policy

- Flight & Hotels rates are subject to availability on the day of actual booking confirmation
- Hotel / Flight rates are valid for only a specific time.
- If those hotels we are giving you it sold out we'll provide you similar Hotel.
- We calculate your cost according to 1 USD = 81 INR if any change in foreign exchange you need to pay
- Cancellation of Flight tickets is as per airline policy.
- 100% Amount is mandatory to issue an Air Ticket.
- 50% Amount is mandatory to book your land package
- Travel Agency Service cost will be charged on cancellation of the package, hotel, flight, cruise, bus, taxi, activities etc
- All refund and cancellation policies are as per the travel agency. - Itinerary may be subject to change due to climatic conditions or other reasons.
- Any change in No. of Pax will attract a change in cost.
- Christmas/New Year/Peak season surcharge may apply to be borne by the traveller
- An itinerary will be Fixed No Amendment in date/time allowed.
- The standard time of check-in is at 14:00 o'clock. and standard check-out is at 12:00 o'clock.
- Early Check-in and late Check-Out unless pre-booked and paid in advance are subject to availability.
- A mandatory refundable security deposit may be required at the Hotel at the time of check-in. The amount may vary depending on the hotel. Cash or credit card is acceptable. The amount is refunded at the time of check-out after clearing all incidental charges.
- Anything not mentioned in the above inclusions.
- Peak Period surcharge if applicable
- If you will not pay your instalments on the given date after that if any fluctuations in the Flight rates or any booking failure may occur so we are not responsible for that.
- Visa Confirmation will depend on the Embassy.
- Visa Fee not refundable and not Transferable
- If any country asks about city tax or tourism fees you need to pay direct at the hotel
- If any Traffic jam or any Natural calamities happen during your trip, we are not responsible for that.
- You need to clear full payment before departure for domestic tours.
- You need to clear full payment 20 days before you depart For International Tours.

Cancellation Policy

- The payment schedule is unique to your package booking and is based on the following factors: location, date of booking, additions, airlines and hotel payment policies, etc.
- A payment plan will be included in the package proposal we send you.
- Tripoholidays retains the right to cancel the reservation after making an effort to contact you if payment is not received according to the timetable specified in the initial booking confirmation email.
- The cancellation policy for the package would govern refunds.

Payment Policy

- **Refundable and non-refundable component**
 - More than 60 days before the tour: Booking Amount
 - 60 – 46 days before the tour: Non-Refundable Component + 15% of Tour Cost
 - 45 – 31 days before the tour: Non-Refundable Component + 25% of Tour Cost
 - 30 – 15 days before the tour: Non-Refundable Component + 55% of Tour Cost
 - 14 – 06 days before the tour: Non-Refundable Component + 80% of Tour Cost
 - 06 – 01 days before the tour: No Refund.